

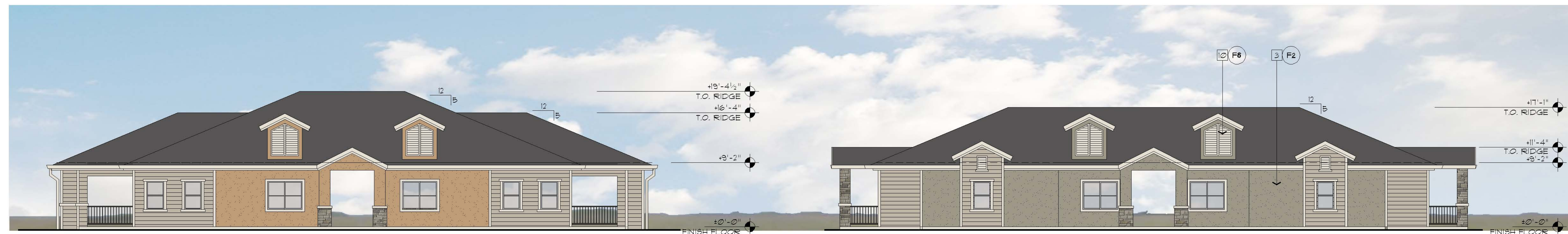
NORTH ELEVATION

KEYNOTES

- 1 HEAVY COMPOSITION SHINGLE ROOF, CLASS A
- 2 STONE
- 3 PLASTER SYSTEM
- 4 WOOD LAP SIDING
- 5 SLIDING DOOR
- 6 BREEZE WAY BETWEEN UNITS
- 7 WINDOW
- 8 METAL GUTTER
- 9 CLEARESTORY ROOF ELEMENT
- 10 LOUVERS
- 11 WINDOW TRIM
- 12 METAL RAILING

FINISH SCHEDULE

- F1 PLASTER MAIN BODY COLOR 'MESA TAN' SW 1695
 - F2 PLASTER MAIN BODY COLOR 'HONED SOAP STONE' SW 9126
 - F3 PLASTER MAIN BODY COLOR 'CITYSCAPE' SW 1067
 - F4 WOOD SIDING 'ANALYTICAL GRAY' SW 1051
 - F5 TRIM ACCENTS 'SHOU WHITE' SW 1042
 - F6 METAL WORK 'SEALSKIN' SW 1675
 - F7 DOORS 'DARK NIGHT' SW 6237
 - F8 STONE VENEER CULTURED STONE 'SOUTHERN LEDGESTONE' COLOR VARIETY - 'ECHO RIDGE'
 - F9 ROOFING 'CERTANTEED' PRESIDENTIAL SHAKE TL 'SHADOW GRAY'
- NOTE 1: SW = SHERWIN WILLIAMS



EAST ELEVATION

WEST ELEVATION



SOUTH ELEVATION

0 4' 8' 16'
SCALE: 1/8" = 1'-0"

HUNTINGTON SENIOR APARTMENTS
for ICON ENTERPRISES - HUNTINGTON PLACE
1650 HUNTINGTON DRIVE
ROSEVILLE, CALIFORNIA

August 7, 2017
REVISED May 15, 2018

craig MIERS + **george SCOTT**
ARCHITECTS llp

ONE STORY ELEVATIONS P9

1624 Santa Clara Drive, Suite 230
Roseville, CA 95681
916.780.0700
916.582.2537 mobile
916.780.0705 fax
craig@miers-scottarchitects.com